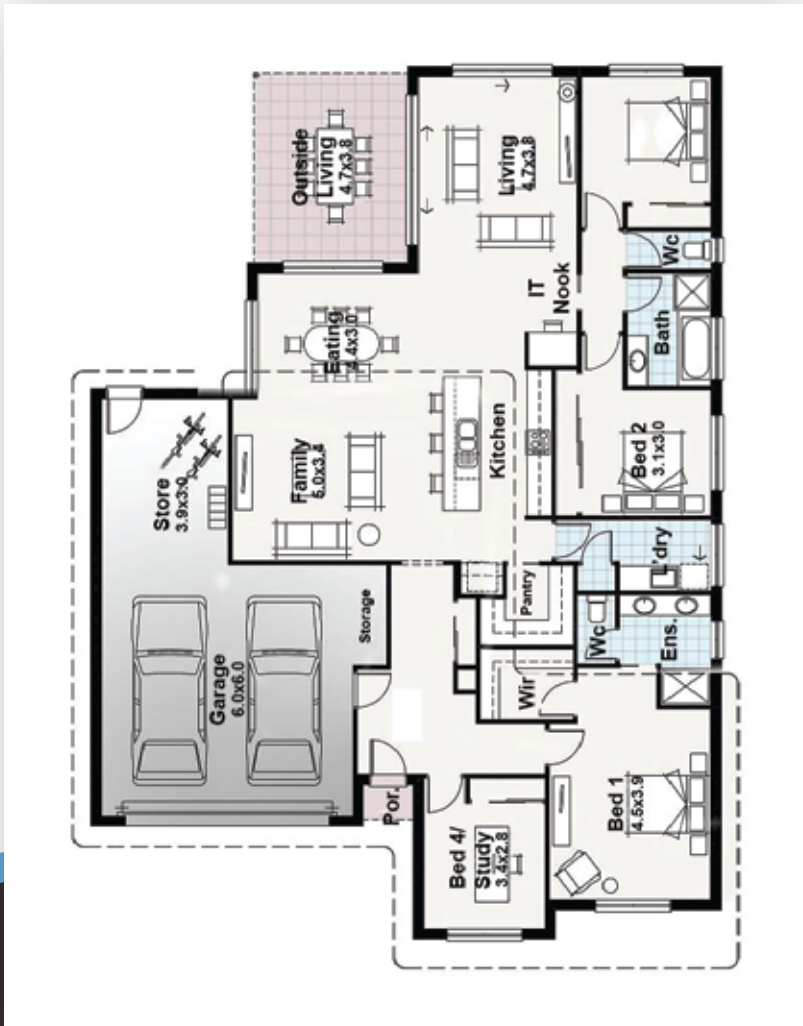




Vogue Facade Pictured



Inclusions

- Fixed Price Contract – no hidden costs
- Engineer Designed Slab & Structural Beams
- LVL Framing Timber - stronger & straighter than pine
- Refrigerated Ducted Heating & Cooling
- Extensive Electrical Layout of Fittings & Fixtures
- Eaves Around the Entire House
- Colorbond Roof
- Modern Range of Quality Fixtures & Appliances
- 3 Coat Paint System
- Modern Rectified Edge Tiles
- 6 Star Energy Rating

*Upgrade options available



BLOCK

28.85m

18.00m

- 4
- 2
- 2
- 2

MUDJIMBA 2

Unlike the original version the Mudjimba 2 fits nicely into the Family range with some nifty changes to the design. 4 bedrooms, great living space, a store room in the garage and plenty of entertaining areas. You will like what you see with the Mudjimba 2.

Width 15.01m Length 20.82m

Residence	186.43	m ²
Outside Living	17.87	m ²
Porch	1.19	m ²
Garage	54.80	m ²
TOTAL	260.29	m²
	28.01	sq