

# ADJ3

SERIES FIFTY-FOUR

 4
  3
  4
  2

# 363 SQ. M.

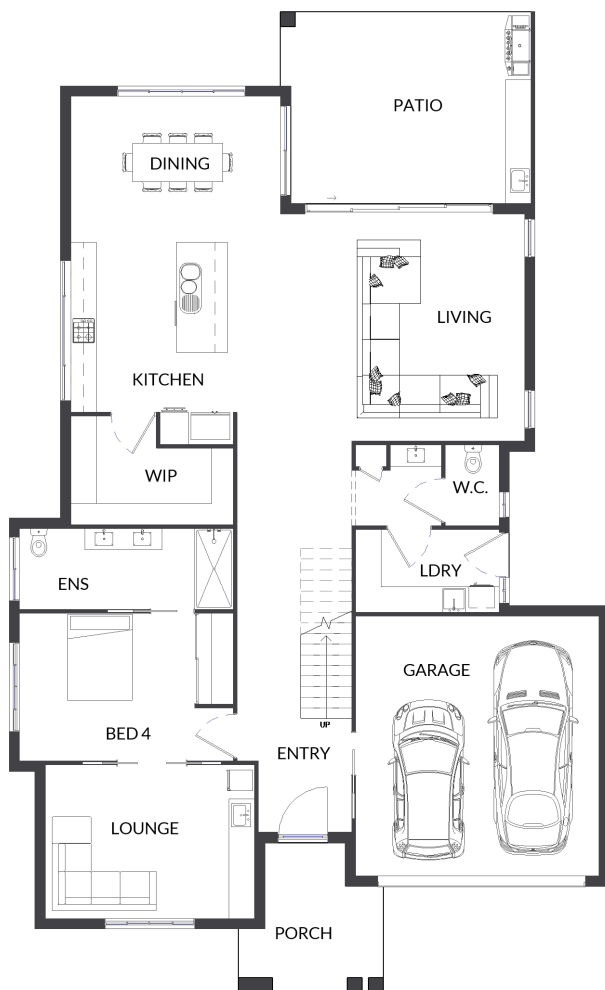


14.1m HOUSE WIDTH    23.0m HOUSE LENGTH

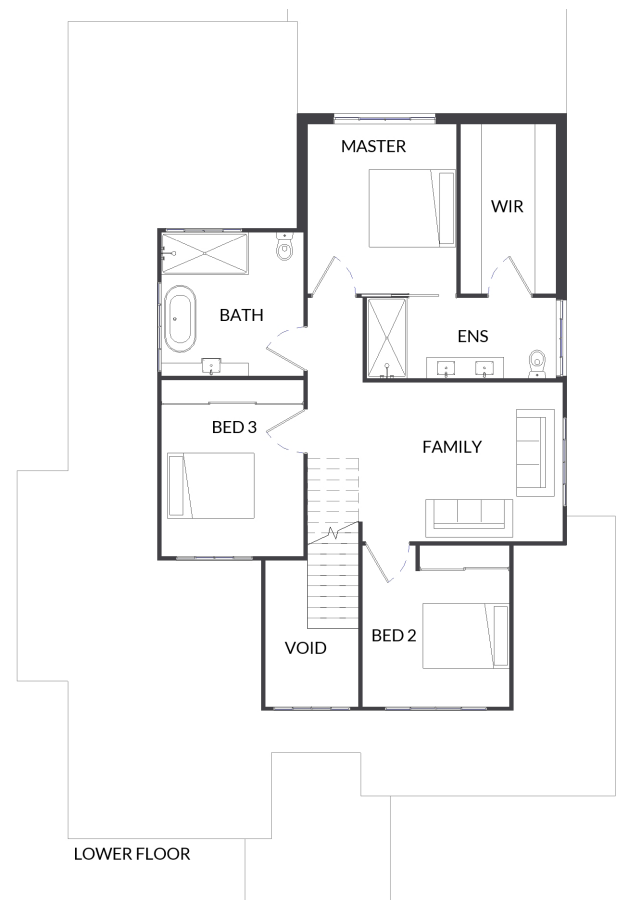
288 LIVING + 26 PATIO + 10 PORCH + 39 GARAGE



LIVABLE HOUSING AUSTRALIA  
PLATINUM LEVEL  
Subject to compliance assessment



LOWER FLOOR



UPPER FLOOR



**P: 0437 568 933**  
**E: [info@crownconstrutions.com.au](mailto:info@crownconstrutions.com.au)**  
**W: [crownconstrutions.com.au](http://crownconstrutions.com.au)**

