

L / NEAR

LOT 17 FAIRWAY DRIVE
WALDARA



Waldara Golf Estate





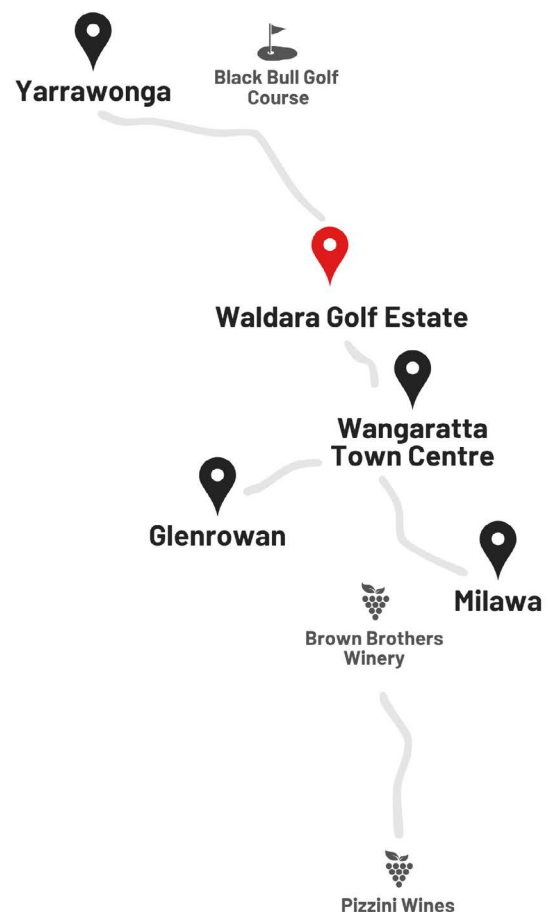
Experience Luxury Living in Wangaratta

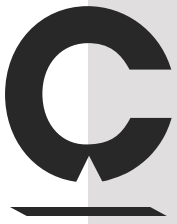
Nestled in the heart of Victoria's High Country, Wangaratta offers an exquisite blend of modern amenities and natural beauty.

Whether you're fine dining, exploring boutique shops or relaxing in your elegantly designed home, Wangaratta provides a lifestyle that is both opulent and inviting. Explore award-winning vineyards and experience the premium tastings of expertly crafted wines. Immerse yourself in the tranquility, charm and serene beauty of our thriving Victorian community.

Waldara Golf Estate is a highly sought after part of town. Living on a golf course offers more than just a stunning backdrop. It's an invitation to a lifestyle of refined elegance and leisure. Enjoy exclusive access to premium golfing facilities, where you can perfect your swing among the beautiful, serene surroundings.

Lot 17 Fairway Drive is the perfect haven for those who appreciate the finer things in life.

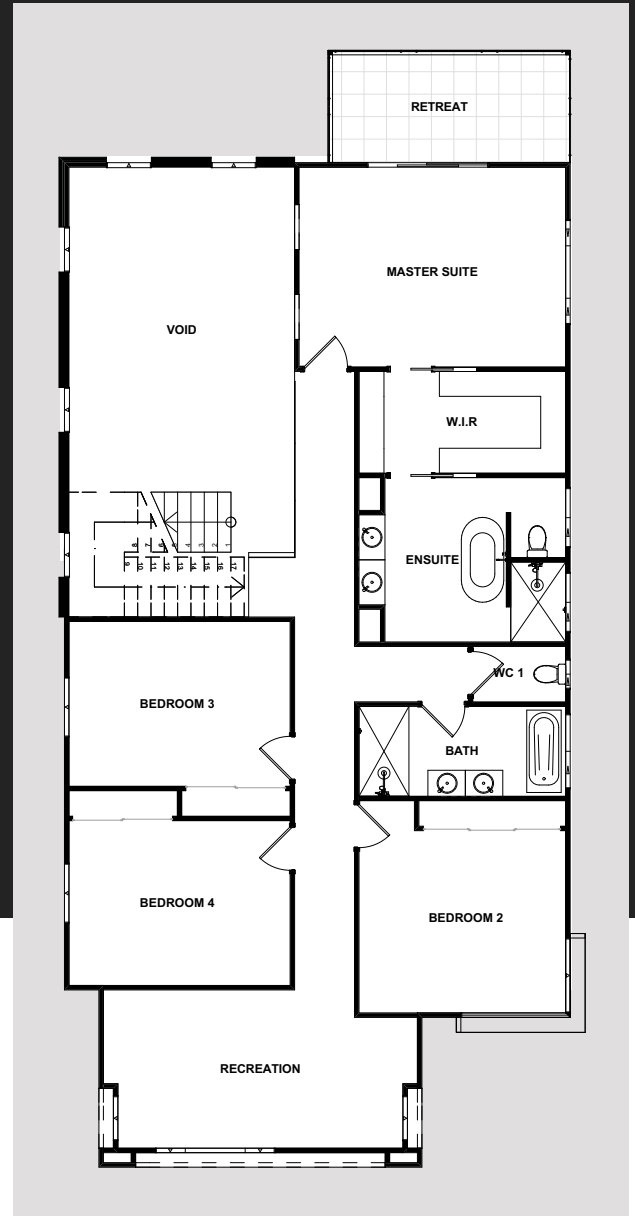
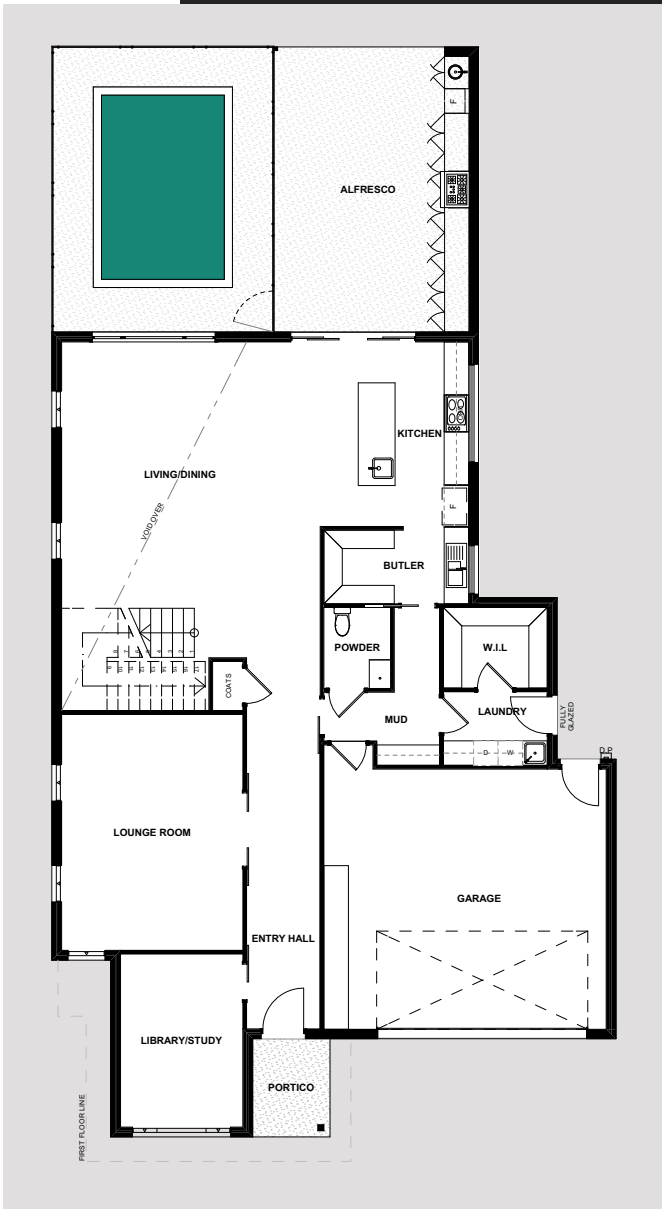




Exclusive House & Land Package

- Entertainer kitchen with butler's pantry
- Undercover entertaining alfresco with an outdoor kitchen
- Private plunge pool
- 7 Star Energy Rating
- SMEG appliances with oven, induction cook-top and integrated dishwasher
- Double garage with additional storage
- ABI Interiors Tapware
- Exposed aggregate driveway
- LED down-lights throughout
- Timber staircase with glass balustrade
- Premium stone benchtops
- Freestanding bath
- Double-glazed windows and doors throughout
- Ducted reverse-cycle refrigerated heating and cooling
- Facade included as per illustrations
- Style your home with expert interior designers at our modern showroom
- Further customisation options available

**ENRICHING LIVES
WITH INSPIRING SPACES.**



Land Size: 1006 m2

Home Design With Modern Flair

Register Your Interest

Jamie Rondinella
 0412 093 500
jamie@crow constructions.com.au

crow
 BUILDING / CONSTRUCTION

*Images are for illustrative purposes only and may include upgrade items. Crown does not supply items such as furniture, fencing or hard landscaping. The package is subject to the developers design approval, councils final approval and engineering design. Package price excludes stamp duty on land, legal fees and conveyancing costs. Crown reserves the right to alter descriptions and/or pricing at any time without notice. The design is property of Crown and must not be used, reproduced or copied without the approval of written consent from an authorised Crown representative. Two part contract - the land contract is with the owner and the builder contract is with the builder. Reg No: CDB-U 53215.